



UNIONE EUROPEA
Fondi Strutturali e di Investimento Europei

National Operational Programme on Metropolitan Cities 2014-2020

Smart Control Room

Comune di Venezia

Smart City ExpoWorld Congress | Barcellona, 19-21 /11/2019

Venezia



Venice Smart Control Room



GOAL: to improve the city mobility and overall safety & security



Input

- SiSa
- MoMA
- Sensors
- Geo Data Base
- Big Data
- ⋮
- Third party DB

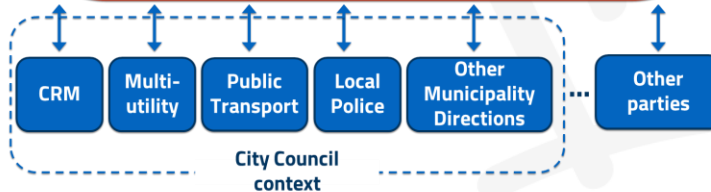
VENIS



Output

- Awareness
- Monitoring
- KPI analysis
- Forecast
- Simulation

Integrations

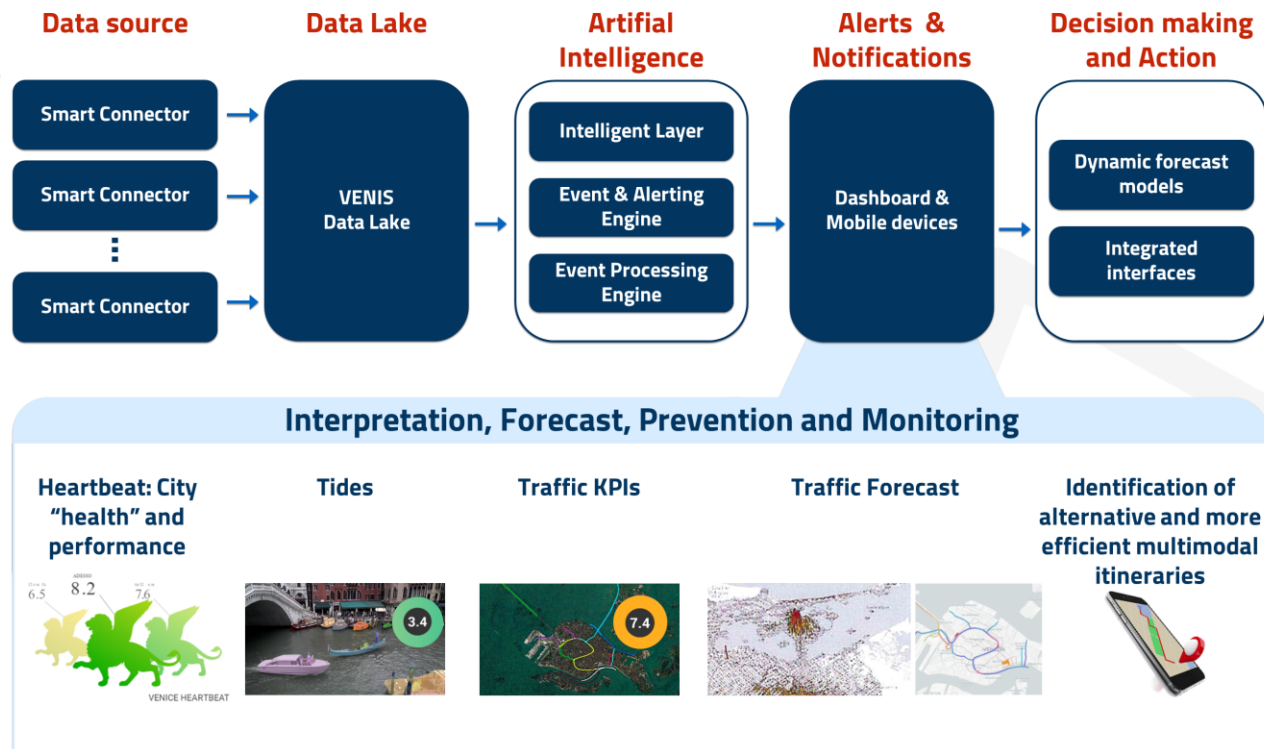


Smart Control Room platform

The platform can: measure the City performance, govern the road, water and pedestrian traffic in order to better support processes decision and policy making

MAIN FEATURES

- **At a glance representation of the City real time status;**
- Coordination of all mobility (water, pedestrian and land)
- **Dynamic and predictive model for integrated mobility;**
- **KPI of the city performance, i.e. tides, weather and water traffic**
- **Georeferentiation;**
- **"multi-device" navigator;**
- **Artificial intelligence** (data correlation, traffic statistic analysis, etc....);
- **Smart presentation** (responsive multiformat and multidevice dashboard).



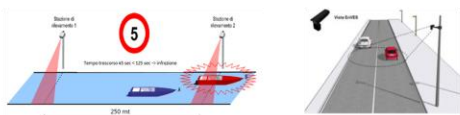
Water Traffic Control System (SiSa)

Control water traffic system for fines and penalty issuing




MAIN FEATURES


- Integrated, modular, scalable and open system;
- H24 automatic operation, in all weather conditions;
- **Different speed limits for different routes;**
- **56 detection points placed in main city channels;**
- **4 detection points for road traffic;**
- **“Tutoring”** technology to measure average speed;
- **“PlateMatching”** technology to univocally recognise the vessel



Conferma di un transito non verificato - 25/10/2018 08:21:42

Stazione iniziale **Stazione finale**
 Canale di Cannaregio - Imbarcadere Tre Archi Canale di Cannaregio - Imbarcadere Guglie



Data: 25/10/2018 08:21:42
Tratta: Da Tre Archi a Guglie
 Verificare il corretto accoppiamento, control confermare

Targa:

Nazionalità:

Classe veicolo:

[Convalida infrazione](#)

[Convalida infrazione e passa al](#)

[Download pdf](#)

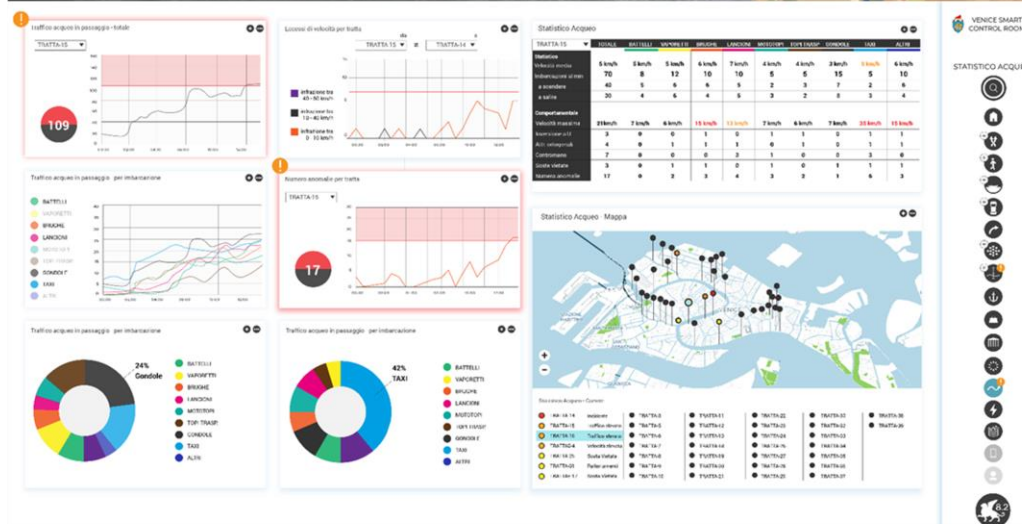
Water traffic monitoring system (MoMA)

Control water traffic system for behaviour tracking and statistic purposes



MAIN FEATURES

- Integrated, modular, scalable and open system;
- H24 automatic operation, in all weather conditions;
- **Different speed limits for different routes;**
- **39 detection points;**
- Machine learning **image recognition technology (AI);**
- **Vessel classification;**
- **Detects each transit over time** (even in different channels/areas), for area and vessel class;
- **Detects real time speed;**
- **Reconstructs routes;**
- **Detects, interprets and highlights “anomalous” types of behaviour**
- **Calculates swell and water traffic KI**



Smart Control Room: coordination places

Main Control Room



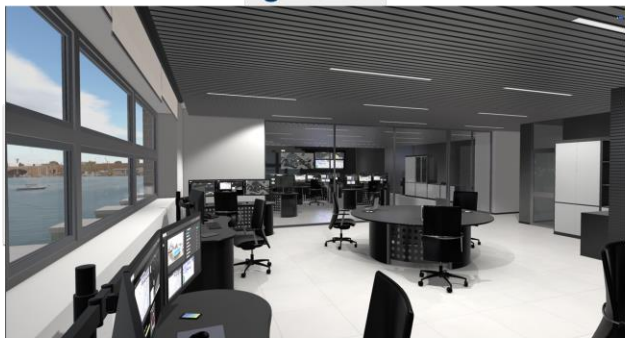
Operational multi-operator

Situation Room



Crisis management

Management Room



Coordination area

Scientific Room



Data analysis and Scenarios simulation



UNIONE EUROPEA
Fondi Strutturali e di Investimento Europei

Thanks for your attention !

www.comune.venezia.it/ponmetrovenezia

Venezia

